

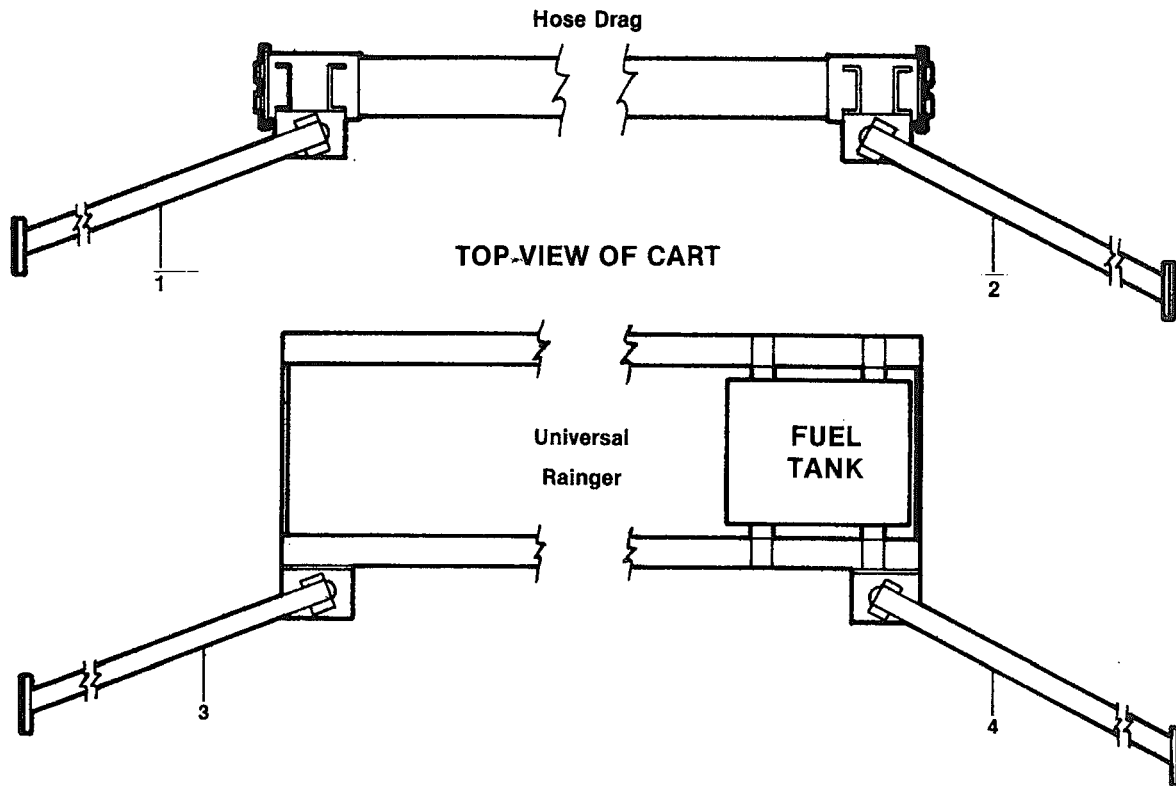
**6000 LINEAR
SECTION 4 – GUIDANCE/ALIGNMENT**



Description	Rev. #	Pg. #
Guidance Box Supports	1-88	4-1
Steering/Safety Box	11-98	4-2
Steering/Safety Box	11-98	4-2.1
Linear Cable Guidance Box	4-92	4-3
Guidance Cable and Posts	1-88	4-4
Guidance Cable Splice Packages	1-88	4-5
Furrow Guidance Assembly	2-98	4-6
Below-Ground Guidance Antenna Mount	2-98	4-7
Below-Ground Guidance Antenna Mount	1-88	4-8
Floating Alignment Controls Prior to 2/85	8-99	4-9
Floating Alignment Controls All Models (Effective 2/85) and Model 6000	8-99	4-9.1
Alignment Control Tower Box Hardware	8-99	4-10
Auto Linear, Auto Reverse Packages	1-88	4-11

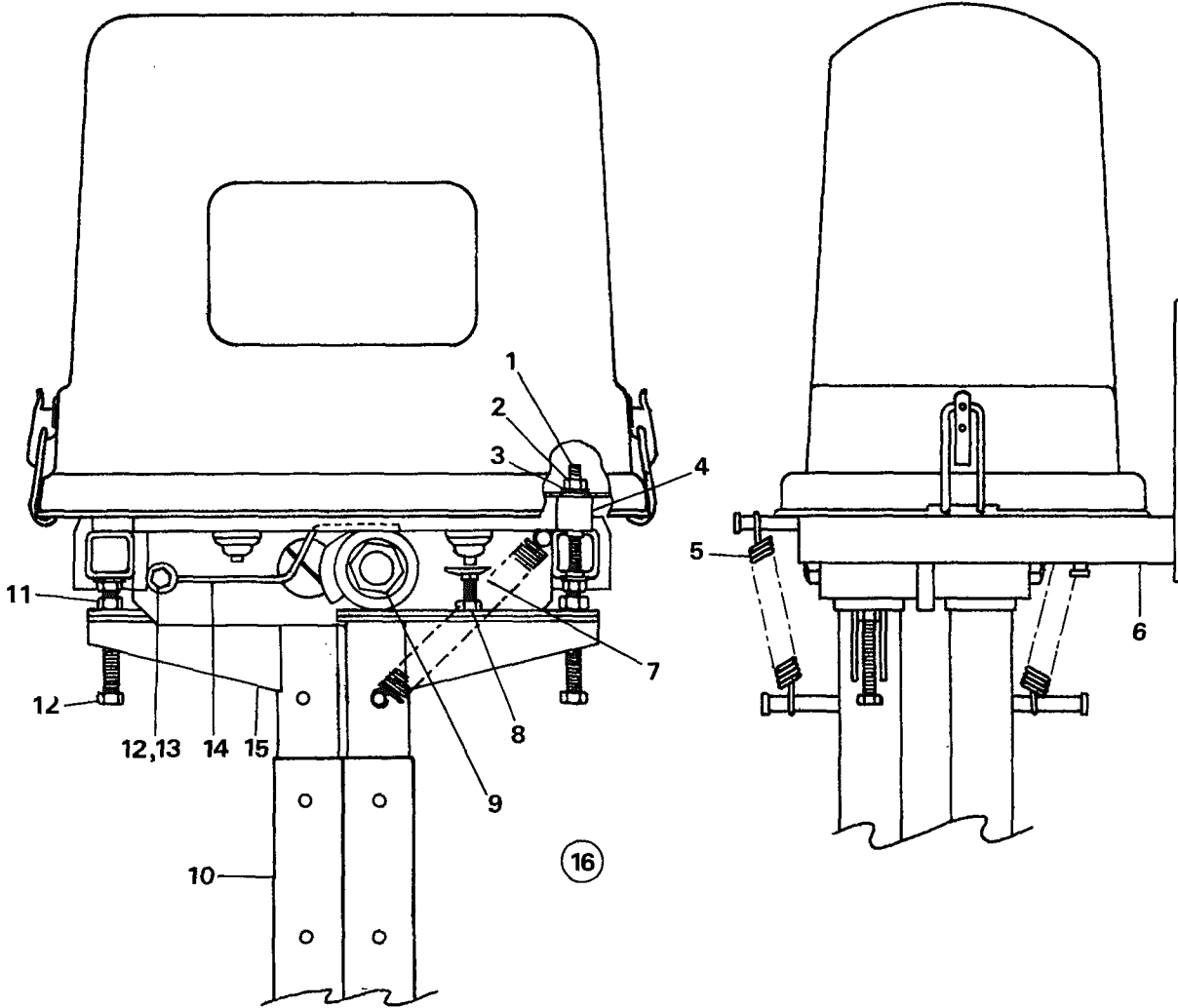
For Hose Drag See 5-25 in Electrical Section

GUIDANCE BOX SUPPORTS

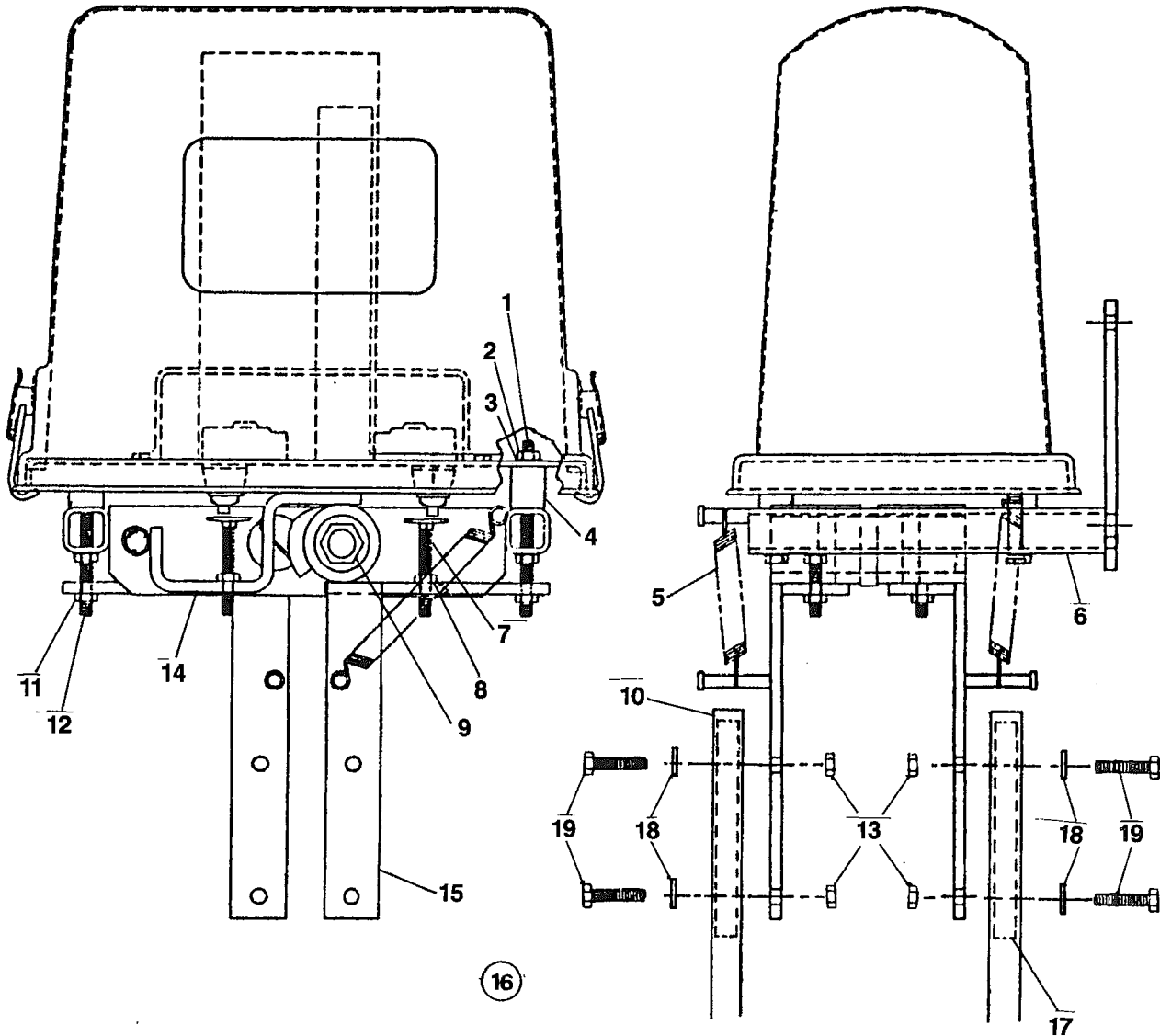


ITEM	DESCRIPTION	PART #
1	Left Guidance Support (4" H.D.)	1732080
	Left Guidance Support (6" H.D.)	1732138
2	Right Guidance Support (4" H.D.).....	1732081
	Right Guidance Support (6" H.D.).....	1732137
3	Long Guidance Support	1730618
4	Short Guidance Support	1730619

Steering/Safety Box

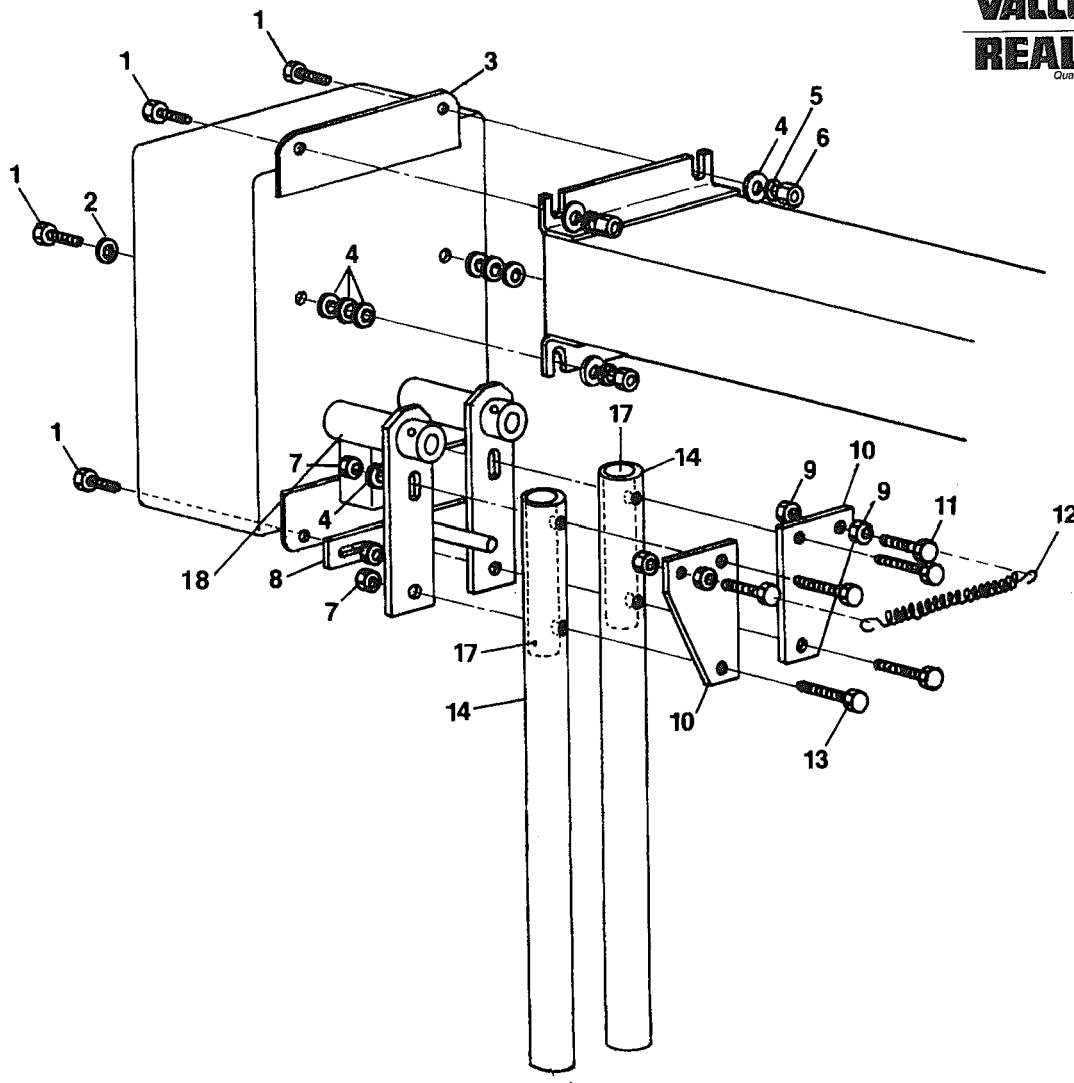


ITEM	DESCRIPTION	PART #	ITEM	DESCRIPTION	PART #
1	1/4" x 2-1/2" Cap Screw	0161054	9	5/8" x 3" Countersunk Bolt	0164138
2	1/4" Lock Nut	0133008	10	Control Arm Extension	1731014
3	1/4" Flat Washer	0142022	11	5/16" Hex Nut	0131019
4	Spacer Sleeve	1730727	12	5/16" x 2-1/2" Cap Screw	0161123
5	Spring	0181078	13	5/16" Lock Nut	0133007
6	Mounting Bracket	1730711	14	Follower Assembly	1730731
7	1/4" x 2-1/2" Elevator Bolt	0164219	15	Control Arm Assembly	1730730
8	1/4" Hex Nut	0131020	16	Steering Safety Box COMPLETE	1811639



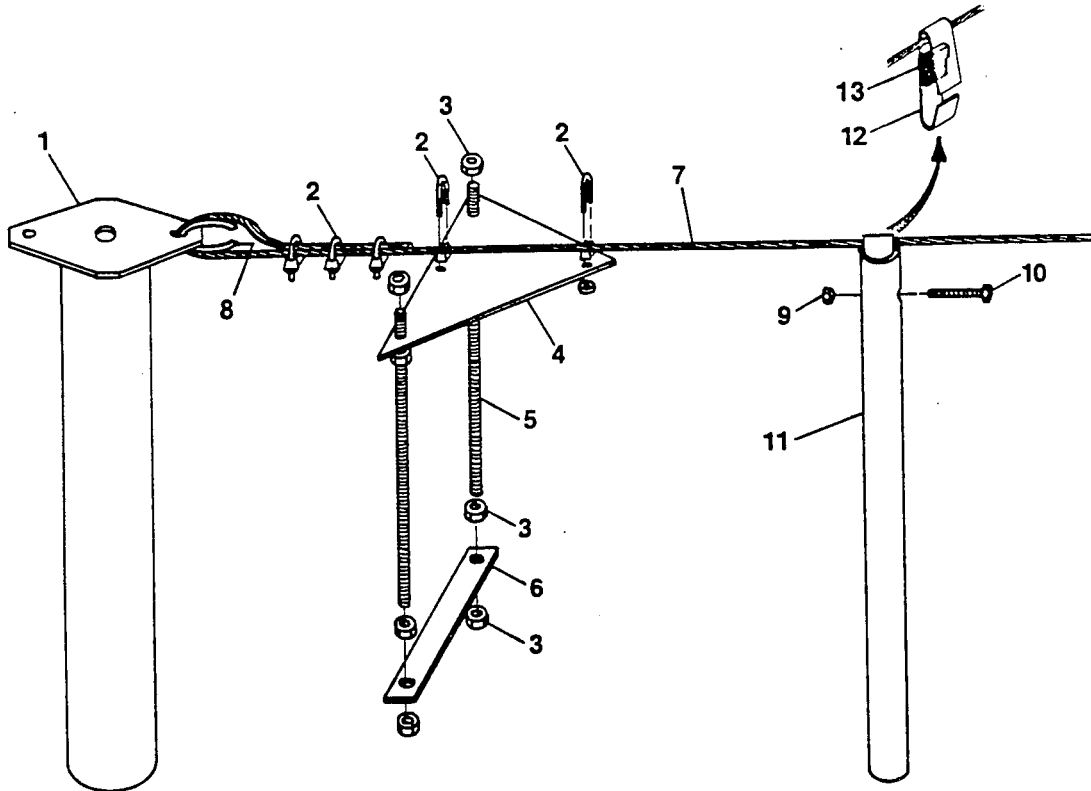
ITEM	DESCRIPTION	PART #	ITEM	DESCRIPTION	PART #
1	1/4" x 2-1/2" Cap Screw	0161054	11	1/4" Hex Nut	0131020
2	1/4" Lock Nut	0133008	12	1/4" x 1-1/4" Cap Screw	0161392
3	1/4" Flat Washer	0142022	13	5/16" Lock Nut	0133007
4	Spacer Sleeve	1730727	14	Paddle Safety Switch	1731351
5	Spring	0181089	15	Assembly Control Arm	1731464
6	Mounting Bracket	1730711	16	Steering Safety Box COMPLETE	1812244
7	1/4" x 2-1/2" Elevator Bolt	0164219	17	Arm Bushing	1731048
8	1/4" Hex Nut	0131020	18	5/16" Flat Washer	0142017
9	5/8" x 3" Countersunk Bolt	0164138	19	5/16" x 1-3/4" Cap Screw	0161095
10	Control Arm Extension	1731047			

LINEAR CABLE GUIDANCE BOX



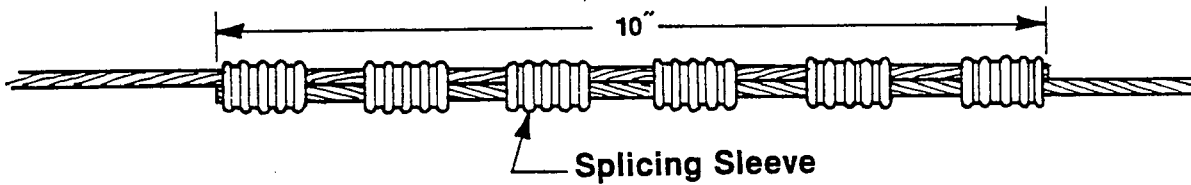
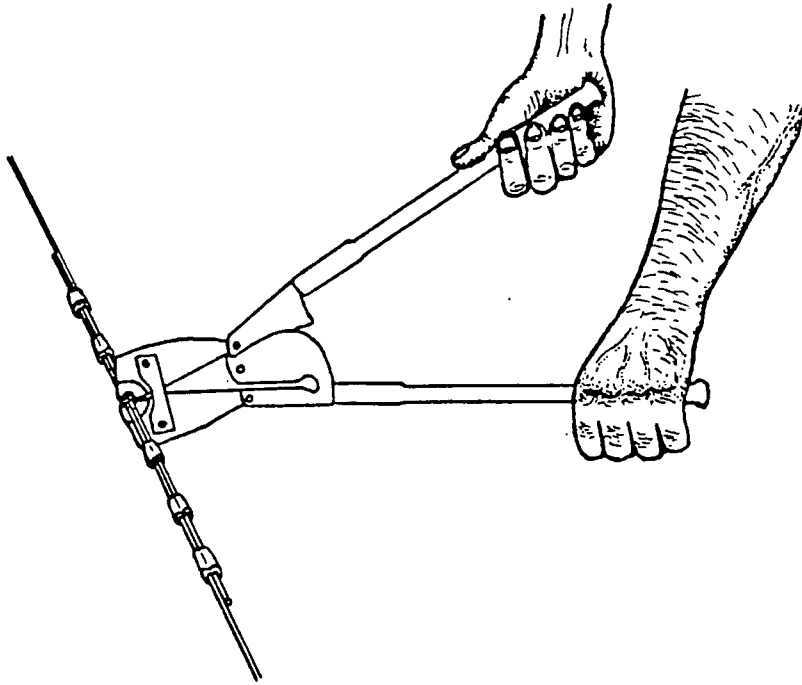
ITEM	DESCRIPTION	PART #
1	1/4" x 1" Cap Screw	0161056
2	1/4" Rubber Washer	1730631
3	Cable Guidance Box	1811530
4	1/4" Flat Washer	0142022
5	1/4" Lock Washer	0141009
6	1/4" Nut	0131020
7	5/16" Lock Nut	0133007
8	Control Arm Stop	1730620
9	5/16" Nut	0131019
10	Control Arm Keeper	1730611
11	5/16" x 1-1/2" Cap Screw	0161049
12	Spring	0181078
13	5/16" x 2" Cap Screw	0161079
14	Control Arm	1731047
15	1/4" Lock Nut	0133008
16	1-1/4" x 1-1/4" Cap Screw	0161183
17	Control Arm Bushing	1731048
18	Plastic Bushing - 4 Required Per Box	1915198

GUIDANCE CABLE AND POSTS



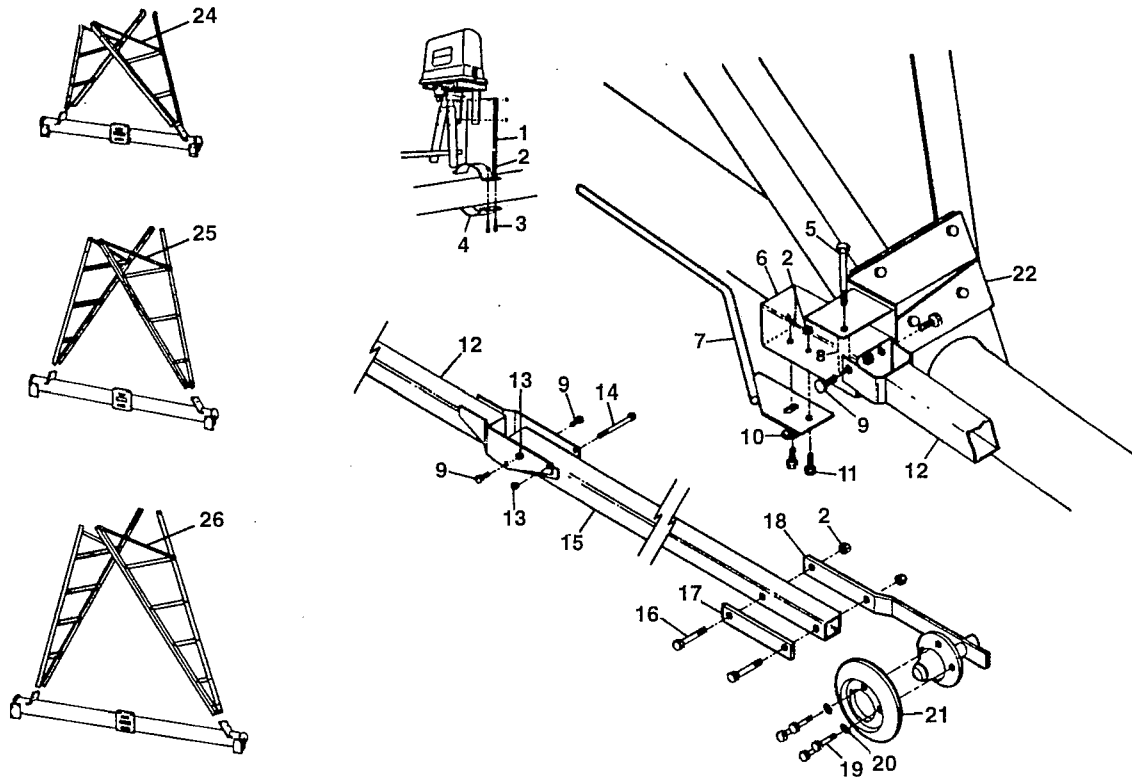
ITEM	DESCRIPTION	PART #
1	Cable Anchor Post	1732057
2	3/16" Cable Clamp	202016
3	3/4" Nut	131008
4	End of Field Stop	1732073
5	Guide Rod	36024
6	Counter Balance	1732072
7	Cable (5,000 Ft.)	201005
8	Cable Hook	1732069
9	1/4" Lock Nut	133008
10	1/4" x 1 1/4" C.S.	161183
11	Support Stake	1732070
12	Wire Clip	1760420
13	Wire Clip Spacer	1760421

GUIDANCE CABLE SPLICE PACKAGES

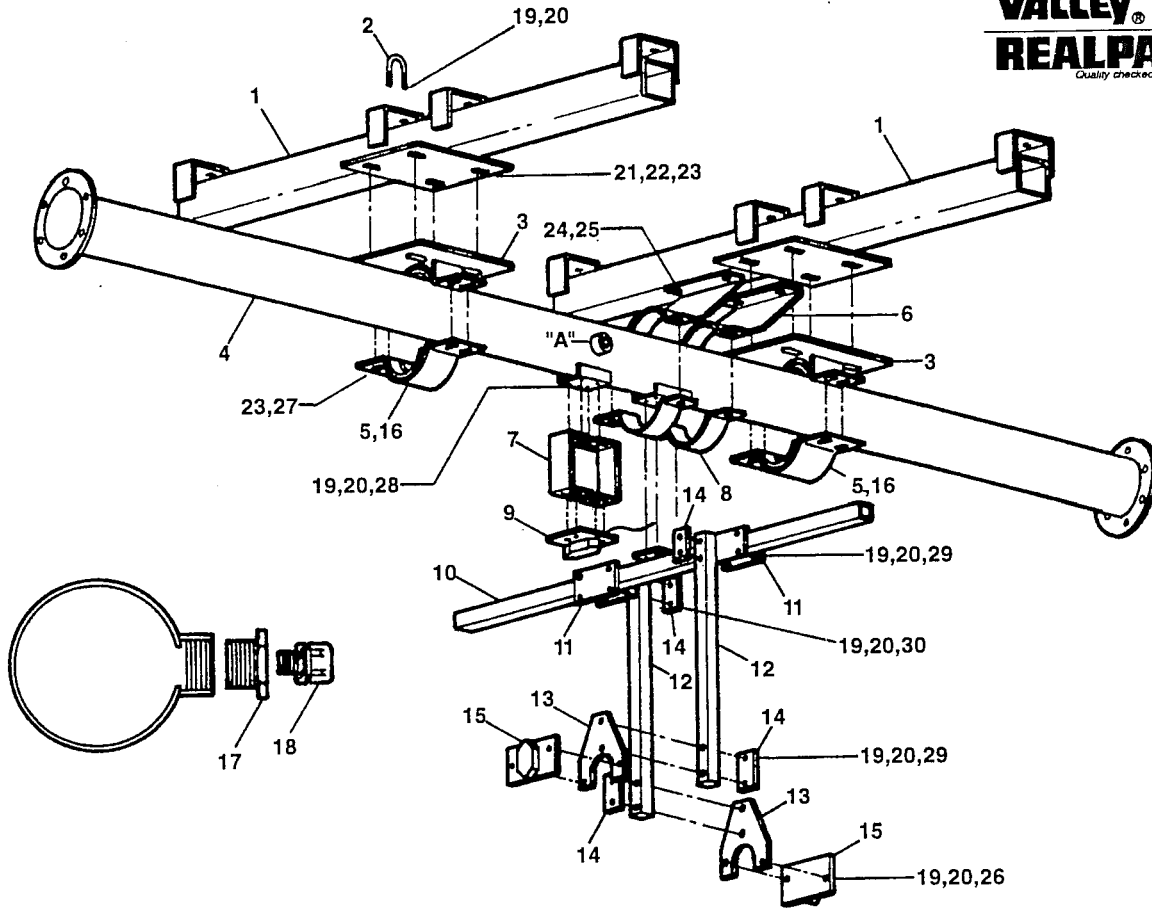


Guidance Cable Splice Pkg's.

Description	Part #
2,000' Cable	Pkg. 883
500' Cable	Pkg. 882
25 Splicing Sleeves	Pkg. 885

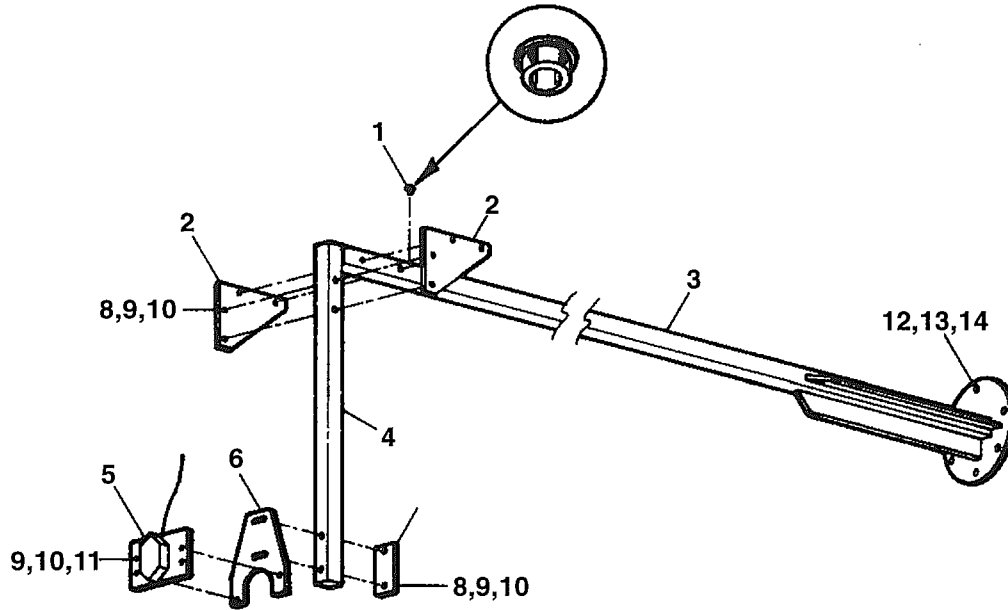


ITEM	DESCRIPTION	PART #	ITEM	DESCRIPTION	PART #
1	Guidance Box Mount.....	1732348	14	5/8" x 5-1/2" Cap Screw	0161105
2	1/2" Locknut.....	0133005	15	Front Guidance Tube	1732357
3	1/2" x 2-1/2" Cap Screw	0161023	16	1/2" x 4-1/2" Cap Screw	0161110
4	6-5/8" Half Clamp	1700622	17	Guide Wheel Mounting Plate	1732373
5	5/8" x 7" Cap Screw	0161104	18	Guide Wheel Mount	1732382
6	Swivel Tube	1732369	19	1/2" x 1-1/2" F.T. Cap Screw	0161025
7	Actuator	1732364	20	1/2" Lock Washer	0141005
8	Pivot Tube	1732361	21	Guide Wheel	0992920
9	5/8" x 1-3/4" Cap Screw	0161088	22	R.H. Pivot Mounting Bracket	1732346
10	1/2" Flat Washer	0142026	23	L.H. Pivot Mounting Bracket (Not Shown) ...	1732343
11	1/2" x 1-1/2" Cap Screw	0161026	24	Low Profile Diagonal Brace	1732386
12	Rear Guidance Tube	1732350	25	Standard System Diagonal Brace	1732383
13	5/8" Locknut.....	0133010	26	High Profile Diagonal Brace	1702999



ITEM	DESCRIPTION	PART #	ITEM	DESCRIPTION	PART #
1	Truss Rod Mounting Bracket	1732159	16	Clamp Spacer	1701025
2	3/8" U-Bolt (8 Req'd).....	0176035	17	2" x 1" Reducing Bushing	0244028
3	Antenna Tube Attachment Bracket	1732164	18	Strain Relief	0314466
4	Antenna Tube	1732165	19	3/8" Locknut	0133006
5	Clamp	1700622	20	3/8" Flat Washer	0142031
6	Control Box Mount	1732171	21	1/2" x 1-1/2" Cap Screw	0161026
7	Antenna Mounting Channel	1732189	22	1/2" Flat Washer	0142026
8	6" Half-Clamp	1902010	23	1/2" Locknut	0133005
9	1000 H2 Antenna	03M4707	24	5/16" x 1" Cap Screw	0161052
	1200 H2 Antenna	03M4962	25	5/16" Hex Nut	0131019
10	Safety & Reference Antenna Assembly	1732160	26	3/8" x 1-1/4" Cap Screw	0161153
11	Backing Plate	1732169	27	1/2" x 2" Cap Screw	0161024
12	Safety Antenna Mount	1732170	28	3/8" x 1" Cap Screw	0161045
13	Antenna Mount Bracket	1732163	29	3/8" x 3" Cap Screw	0161037
14	Antenna Drop Strap	1732161	30	3/8" x 5" Cap Screw	0161035
15	1000 H2 Safety Antenna	0315699			
	1200 H2 Safety Antenna	0315700			

BELOW-GROUND GUIDANCE ANTENNA MOUNT

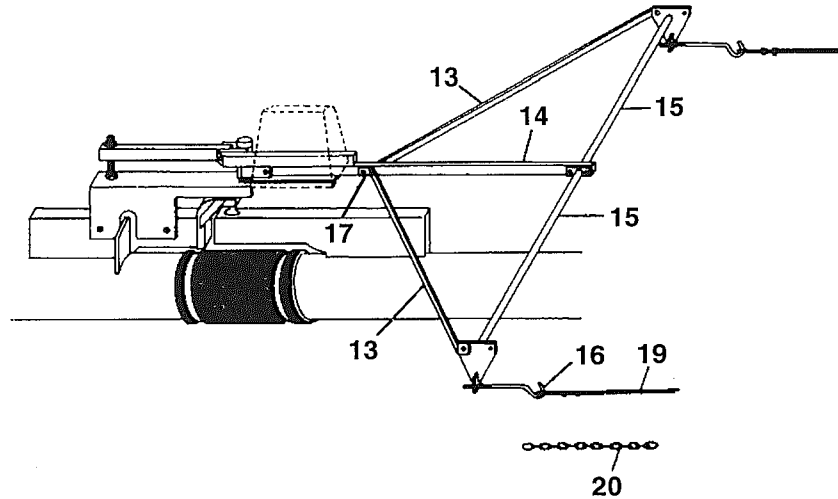
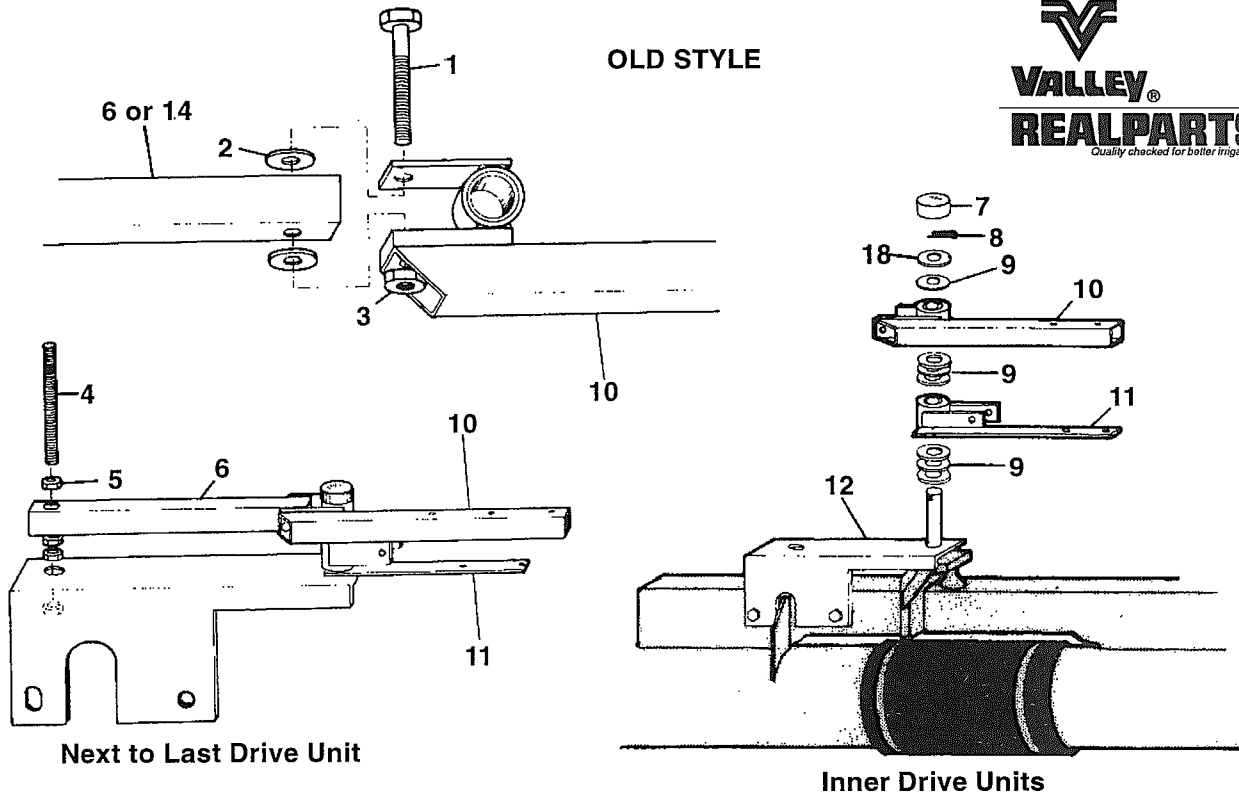


ITEM	DESCRIPTION	PART #
1	Snap-on Bushing	0992070
2	Antenna Tube Plate	1732167
3	Horizontal Antenna Tube	1732166
4	Antenna Tube	1732162
5	1000 H2 Antenna	0315701
	1200 H2 Antenna	0315702
6	Antenna Mount Bracket	1732163
7	Antenna Drop Strap	1732161
8	3/8" x 3" Cap Screw	0161037
9	3/8" Flat Washer	0142031
10	3/8" Lock Nut	0133006
11	3/8" x 1-1/4" Cap Screw	0161153
12	1/2" x 1-1/2" Cap Screw	0161026
13	1/2" Flat Washer	0142026
14	1/2" Lock Nut	0133005

FLOATING ALIGNMENT CONTROLS

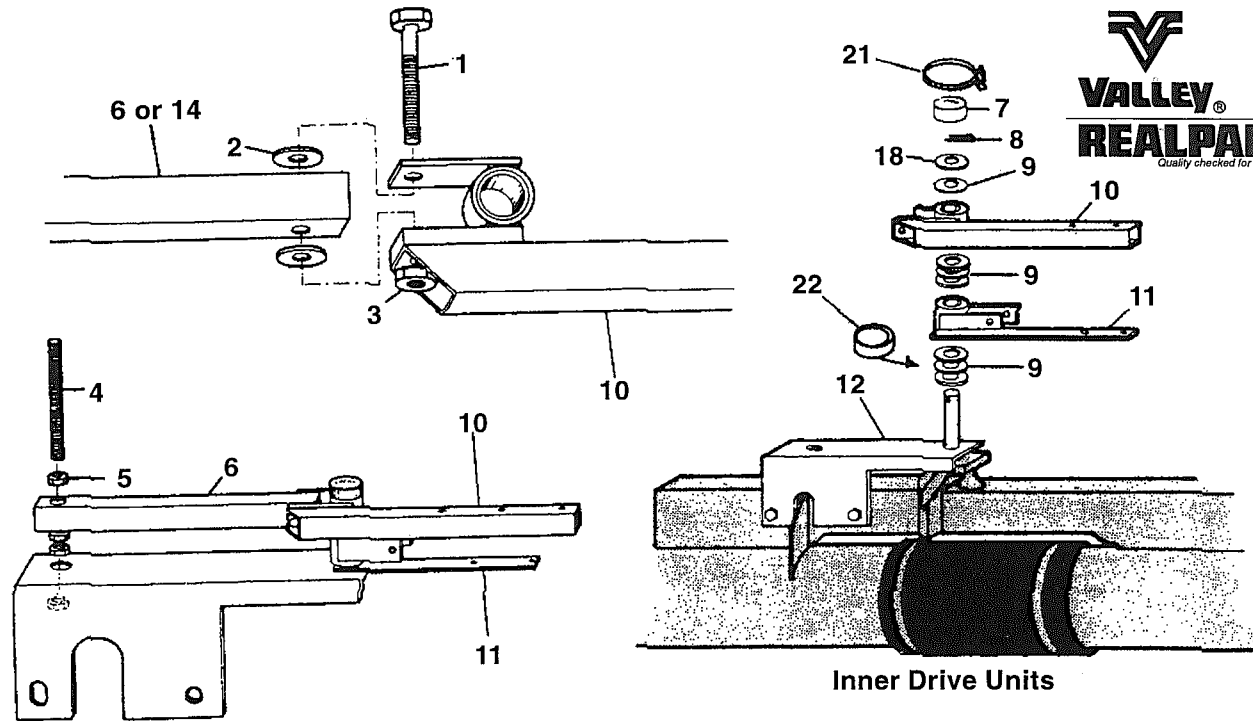


OLD STYLE



ITEM	DESCRIPTION	PART #	ITEM	DESCRIPTION	PART #
1	1/2" X 3-1/2" Cap Screw	0161060	14	Alignment Tube	1730571
2	1/2" Flat Washer	0142026	15	Cable Attachment Assembly	1730572
3	1/2" Lock Nut	0133005	16	3/8" x 7" Hook Bolt	0161366
4	Stabilizer Stud	1730579	17	Pad	1730478
5	3/4" Nut	0131008	18	Steel Washer	0141063
6	Outer Tower Box Stabilizer	1730580	19	105' Span Cable - 8" & 6-5/8" System	1731008
7	Caplug	0261033		105' Span Cable - 10" System	1702751
8	1/4" Cotter Pin	0151015		126' Span Cable	1731009
9	Alignment Washer	1730570		147' Span Cable	1731010
10	Yoke & Tower Box Support	1730566		160' Span Cable	1731011
11	Yoke & Control Rod	1730562		170' Span Cable	1731012
12	Alignment Shaft Assembly	1730559		185' Span Cable	1731013
13	Brace	1730485	20	Single Transition Chain	1730581

FLOATING ALIGNMENT CONTROLS

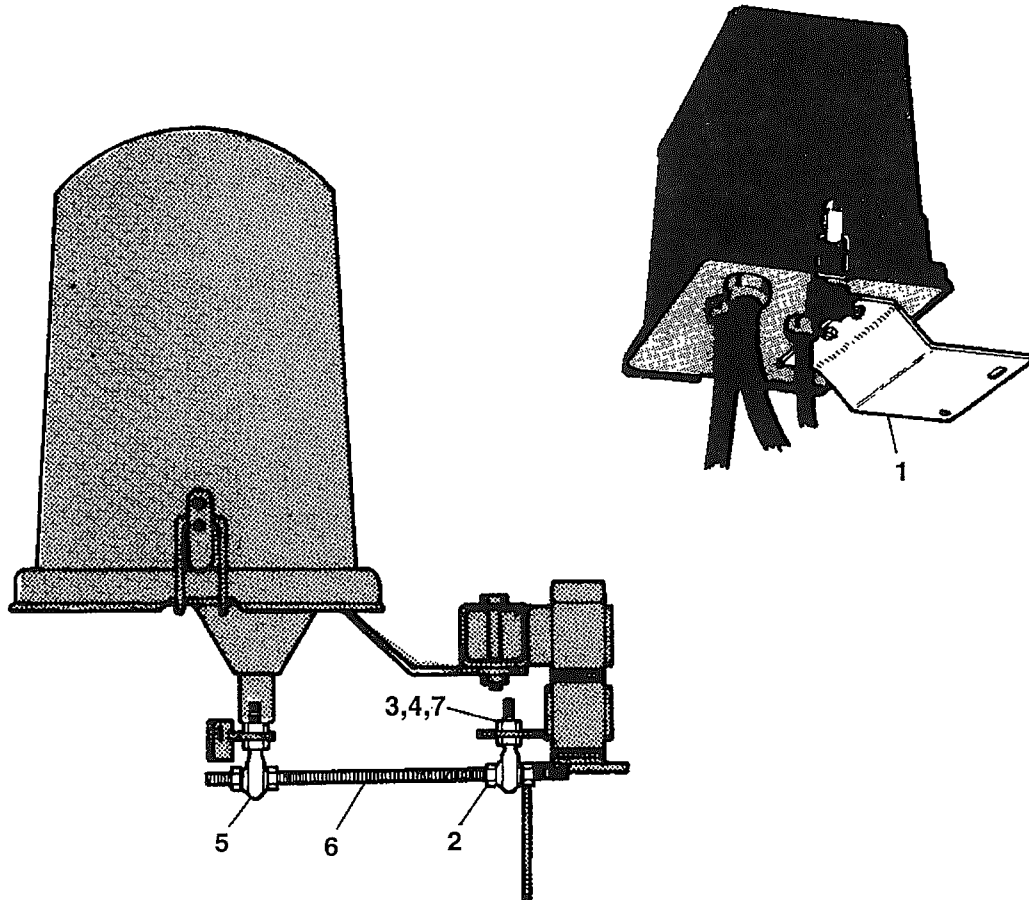


Next to Last Drive Unit

Inner Drive Units

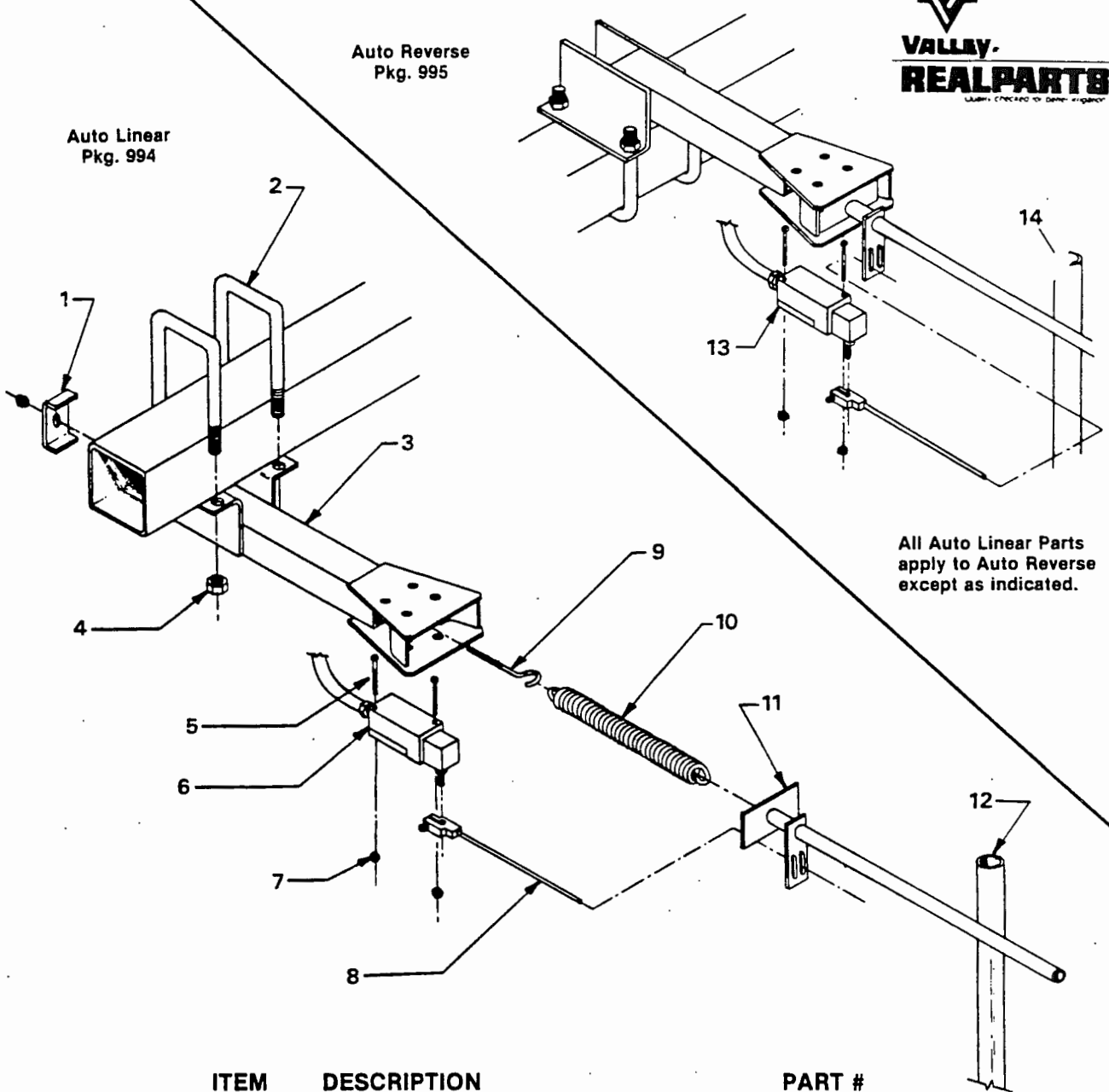
ITEM	DESCRIPTION	PART #	ITEM	DESCRIPTION	PART #
1	1/2" X 3-1/2" Cap Screw	0161060	105'	Span Cable - 10" System	1702751
2	1/2" Flat Washer	0142026	126'	Span Cable	1731009
3	1/2" Lock Nut	0133005	147'	Span Cable	1731010
4	Stabilizer Stud	1730579	160'	Span Cable (STD + Model 6000)	1731011
5	3/4" Nut	0131008	161'	Span Cable	1780849
6	Outer Tower Box Stabilizer	1730580	170'	Span Cable	1731012
7	Caplug	0261033	185'	Span Cable	1731013
8	1/4" Cotter Pin	0151015	109'	Span Cable (Model 6000)	1780665
9	Alignment Washer	1730570	128'	Span Cable 8" Span (Model 6000)	1780671
10	Yoke & Tower Box Support	1730566	146'	Span Cable 8" Span (Model 6000)	1780672
11	Yoke & Control Rod	1730562	164'	Span Cable (Model 6000)	1780668
12	Alignment Shaft Assembly	1730559	128'	Span Cable 6-5/8" Span (Model 6000)	1780666
13	Brace	1730485	146'	Span Cable 6-5/8" Span (Model 6000)	1780667
14	Alignment Tube	1730571	183'	Span Cable (Model 6000)	1780669
15	Cable Attachment Assembly	1730572	201'	Span Cable (Model 6000)	1780670
16	3/8" x 7" Hook Bolt	0161366	20	Single Transition Chain	1730581
17	Pad	1730478	21	Hose Clamp 1-3/4"	0271064
18	Steel Washer	0141063	22	Bearing Sleeve	0933010
19	105' Span Cable - 8" & 6-5/8" System	1731008	23	Threaded Chain Connector	0323042

ALIGNMENT CONTROL TOWER BOX HARDWARE



ITEM	DESCRIPTION	PART #
1	Tower Box Mounting Plate	1730577
2	5/16" Nut	0131037
3	5/16" Lock Washer	0141008
4	5/16" Flat Washer	0142017
5	5/16" Ball Joint Rod End R.H.	0992984
	5/16" Ball Joint Rod End R.H. (Stain. Steel)....	0996131
6	Adjustment Rod.....	1731232
7	5/16" - 24 Nut	0131068

AUTO LINEAR, AUTO REVERSE PACKAGES



ITEM	DESCRIPTION	PART #
1	End Plate	1731062
2	3/4" x 7" U-Bolt	176048
3	Auto Linear Switch Mount	1731061
4	3/4" Hex Nut	131008
5	#10 x 2" R.H.M.S.	164137
6	Auto Linear Switch Assy.	1811862
7	#10 Nut	131055
8	Micro Switch Arm Lever	315623
9	3/8" x 7" "J" Hook	161366
10	Spring	181007
11	Swivel Arm Assy.	1731055
12	Stop Arm - 66" Long	1731068
13	A.R. - A.S. Switch	1811769
14	Stop Arm - 72" Long	1731069

