



RP36

Roller Press Separator

Owners Manual



Accent Manufacturing Inc.
Unit #602 – 30731 Simpson Road, Abbotsford, BC V2T 6Y7
Telephone: 604.850.7799 Facsimile: 604.850.7909
Toll Free 1-877-855-4890
kerryd@nsibrew.com
<http://www.accentmanufacturing.com/>

The Accent is on Quality



Accent Manufacturing specializes in the design, manufacture and installation of component and turn-key stainless steel processing equipment for food, beverage, pharmaceutical and chemical industries.

Through the latest technologies in design, engineering and fabrication, we offer highly engineered and superbly crafted products and systems. We also provide complete control systems (UL and CSA certified) suitable for any process application. Systems range from manual to fully automated PLC/PC based technologies.

We can provide standard products or custom design to meet your requirements:

- Processors, Pasteurizers and Cookers
- Blenders and Mixers
- Hot and Cold Storage Tanks
- Fermenters and Bioreactors
- Solid and liquid separators
- Pressure Vessels

Our Turn-key systems include:

- CIP (Clean In Place)
- Pasteurizers
- Breweries
- Soy milk plants
- Pump stations

Accent Manufacturing Inc.

Unit #602 – 30731 Simpson Road, Abbotsford, BC V2T 6Y7

Telephone: 604.850.7799 Facsimile: 604.850.7909

Toll Free 1-877-855-4890

kerryd@nsibrew.com

<http://www.accentmanufacturing.com/>

The Accent is on Quality

Accent

RP36 Roller Press Separator

Table of Contents

Product Description	4
Features	4
Specifications	4
Safety and Warnings	5
Installation	5
Operation.....	6
Maintenance	7
Parts List	8

Product Description

The Accent RP36 is a stainless steel roller press designed to dehydrate by mechanical compression the manure solids generated by the IFRS 36 Separator. This powerful 1.5 HP unit uses a combination gum roll and perforated screen system to remove the residual liquid from the separated manure solids. The Roller Press incorporates a CIP systems for the automated cleaning of the unit during and after usage.

Features

- Perforated SS Screen roller
- 304 stainless steel construction
- Automated Clean In Place (CIP) system
- Natural Gum Rubber roller
- Simple mounting to IFRS 36
- 1.5 horsepower SEW direct drive

Specifications

Overall dimensions: Length: 50", Width: 52", Height: 28"

Weight: 480 lb.

Power requirements: 230/460/575 volt @ 5.2/2.6/2.0 amp 3 phase
230 volt @ 8.6 amps 1 phase

Continuous throughput processes the output from the discharge end of the Accent IFRS 36 Separator

Safety and Warnings

Warning: The IFRS 36 Rotary Screen Separator may be used only for the intended purpose as specified by the manufacturer. Any use other than that for which it is intended voids all warranties specified or implied. The manufacture accepts no liability for personal injury or loss of life or livestock, damage to this equipment or other equipment used in conjunction with or in the vicinity of this equipment as a result of misuse of this equipment. The owner of this equipment could be deemed liable if it is operated irresponsibly leading to personal injury.

Caution: Never operate this equipment with covers open or guards removed. Do not tamper with equipment covers or safety guards.

Caution: This equipment could start unexpectedly.

Caution: Keep hands and feet away from this machinery when operating.

Caution: Keep small children, pets and livestock away from this equipment while operating.

Caution: Do not open electrical panels when power is on. Do not modify the electrical system without the manufacturer's approval.

Note: Read this entire manual before operating your IFRS 36 Separator to ensure you know all safety precautions, to avoid damage to your unit and to ensure a long life of trouble free operation.

Installation

The RP36 mounts quickly and easily to the discharge end of the IFRS 36 by means of the attaching adapter frame (included). You will need about 40" clearance below the IFRS 36 at the discharge end to accommodate the RP36 and its liquid outlet plumbing.

Bolt the attaching adapter frame to the discharge end of the IFRS using the stainless steel mounting hardware included in the kit.

Hang the RP36 onto the mounting lugs of the attaching adapter frame.

Caution: Do not attach the RP36 to the IFRS 36 using any means other than that specified by the manufacturer. Accent Manufacturing assumes no responsibility for accidental damage or personal injury caused by misuse or inappropriate installation of this equipment.

Install the filling hopper with SS mounting hardware provided atop of the RP36.

Plumb a discharge pipe to the 4" OD drain tube of the IFRS 36.

The RP36 is manufactured to operate at the voltage specified by the customer. Using wiring standards specified by local electrical codes, connect the RP36 to a 230, 460 or 575 volt (as per unit ordered) 3 phase electrical supply equipped with a suitable circuit interrupter. If the service to the IFRS 36 is of sufficient capacity, the RP36 may be bridged onto the same feed (preferred) as it will operate at the same time as the IFRS 36. See your IFRS 36 Owners Manual for details.

Connect the CIP water inlets to the CIP water feed system of the IFRS 36 using standard hose and connectors.

Operation

Caution: Keep hands and feet clear of the internal mechanism of this equipment while operating. This unit is of sufficient mass and operating power to inflict serious injury.

Caution: Keep small children and animals away from this equipment while operating.

Caution: Do not open electrical panels on this equipment while power is applied. Lethal voltages are present.

The RP36 is designed to work in conjunction with the IFRS 36. A lever arm system is used to apply pressure between the screen roller and the gum. To adjust, run the RP36 and the IFRS 36 while processing manure. Observe the moisture content of manure solids. Add or remove counter weight to the lever arm until the desired moisture content is obtained

Warning: Counter weight must not exceed 40 lbs

Warning: Do not allow any foreign material to enter the RP36 during operation. Foreign material can damage the rubber gum roller and perforated screen roller. Should any damage to the these components occur, discontinue use of the unit immediately and contact local dealer for service.

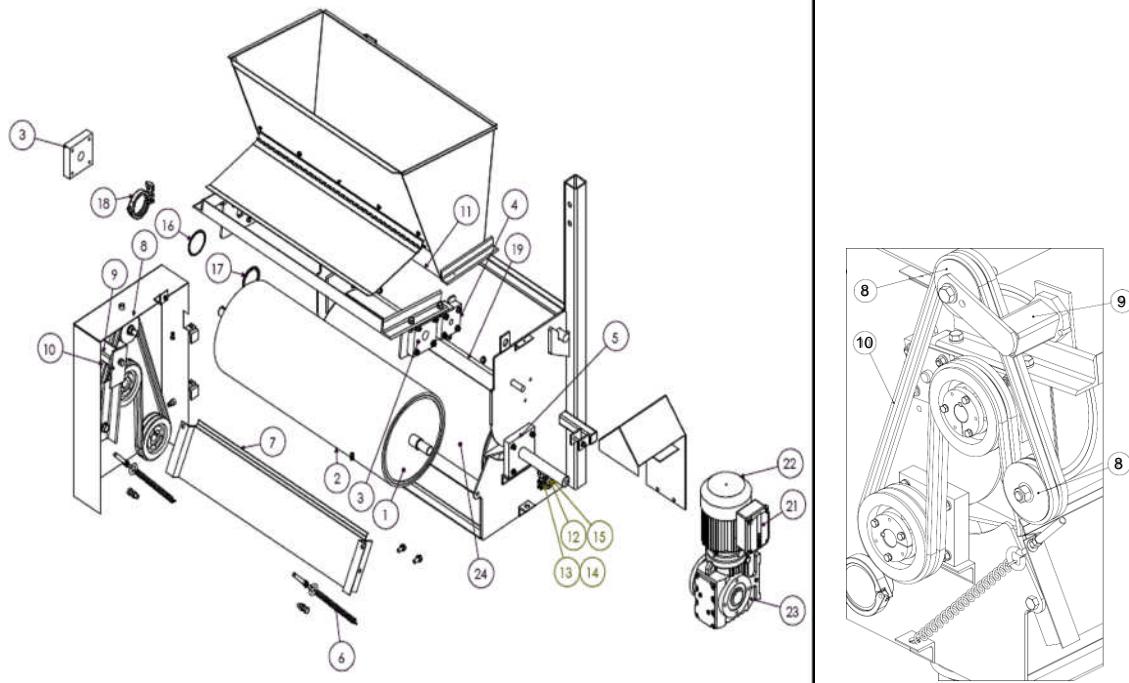
Maintenance

After each use, allow the unit to run for 1 - 2 minutes to rinse the perforated screen and internal parts. The CIP jets will activate to automatically clean the unit. You may temporarily reduce the CIP interval to speed up the cleaning process.

The RP 36 uses roller bearings on the roller screen and gum roller. These bearings require periodic greasing. Lubricate all bearings as dictated by the hours of operation of the roller press to ensure trouble free operation.

Inspect all UHMW bushings and wear plates regularly and replace as required.

Parts List:



Item #	Part #	Description	Qty
1	26-0024	Gum Roller Rubber Coated Roller Assembly	
2	50-4072	Re-vulcanizing Gum Roll	
3	50-5322	Bearing 1 1/4" x 4 7/8" x 1 1/4" Delrin	
4	50-5323	Bushing 3/4" ID x 4" x 1 1/4" Delrin	
5	50-5321	Bushing 1 1/2" ID x 5 1/2" x 5 1/2" x 1 1/4" Delrin	
6	60-5219	Spring LE-125L5 for Doctor Blade	
7	40-0012	Doctor Blade Knife	
8	50-5320	Pulley Idler 4" OD Delrin	
9	60-5536	Belt Tensioner	
10	60-5513	Belt Double Sided #BB75	
11	60-0753	Flapper Neoprene	
12	60-0255	Spray Nozzle 1/4" HH-10	
13	60-0549	Clamp TC 1 1/2"	
14	60-0547	Gasket TC 1 1/2"	
15	40-0072	Cap & Coupling Assembly	
16	60-0571	Cap TC 3"	
17	60-0573	Gasket TC 3"	
18	60-0574	Clamp TC 3"	
19	40-1125	Deflector UHMW	
20	60-5339	Retaining Ring Internal 1 1/2" Shaft	
21	30-0690	Gear Drive SEW complete	
22	30-0074	1 1/2 HP Electric motor SEW	
23	30-0075	Gear box SEW	
24	26-0087	Perforated Roller Screen 12 3/4" x 36"	